

The Gateway to Mt. Everett

Curiosity Shop and Tea House

Mt. Washington, Massachusetts

P. O. Copake Falls, N. Y.

Telephone Copake 17-22



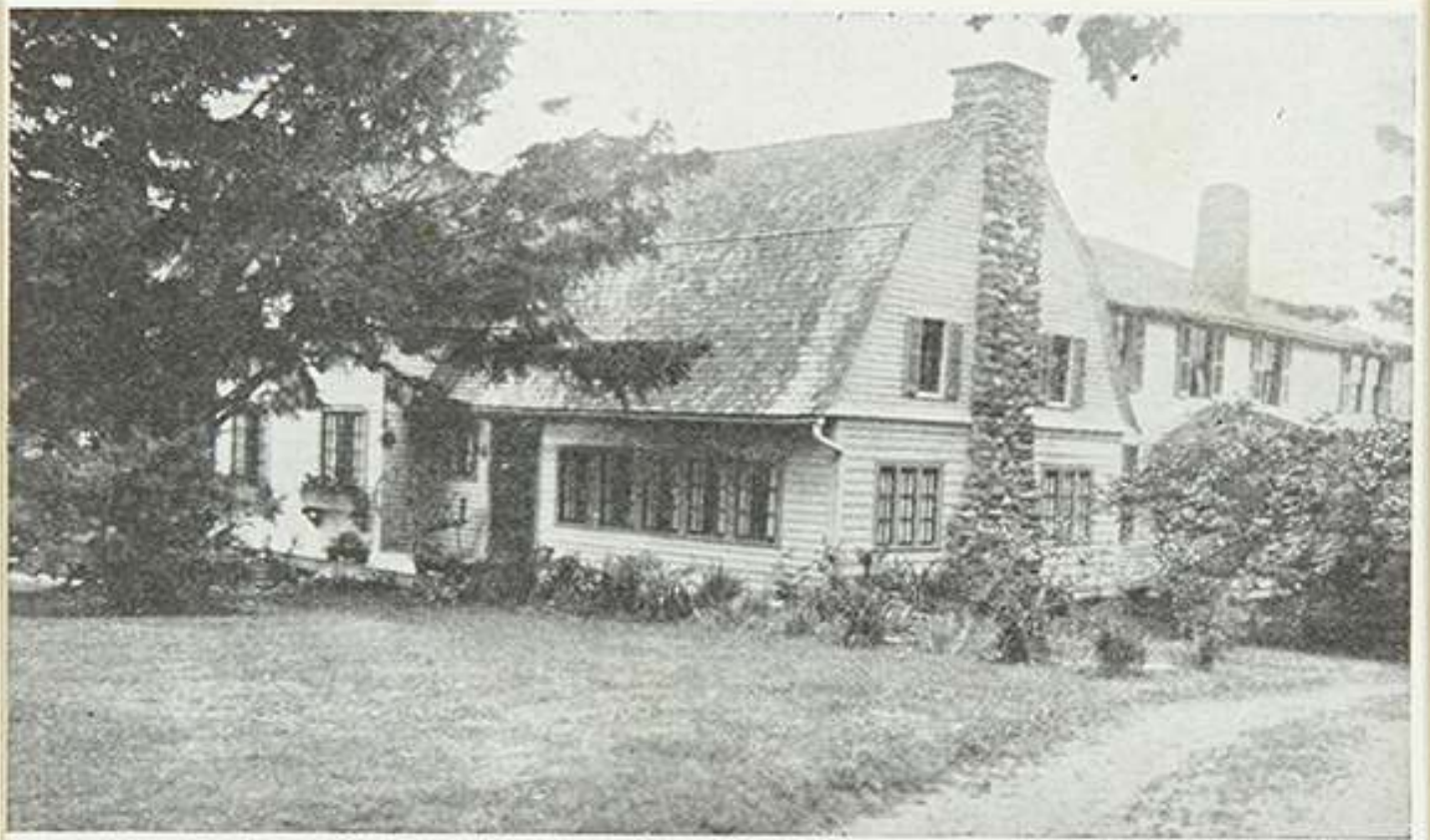
A friendly welcome awaits you, in an unusual and artistic environment. Luncheon, tea or dinner, perhaps a game of bridge included.

Every detail is personally supervised, from abundant, delicious food, to the attractive service on lovely old china, silver and fine linen.

The peace of the hills may be enjoyed while dining on the cool screened verandah, or the warmth of the log fire and the glow of candles may appeal.

In the little shop you will find old china, silver, copper, brass and curios. There is also a large variety of inexpensive gifts.





Cold Brook Farm Guest House

Mr. and Mrs. Charles C. May
Mt. Washington, Massachusetts

P. O. Copake Falls, N. Y.

Telephone Copake 17-22



The friendly welcome extends to the exclusive Guest House, three hundred feet down the road from The Gateway. It accommodates a limited number of guests who seek rest and freedom from formality.

The house is artistically and comfortably furnished. The living room is twenty-four by thirty-two feet, two stories high with a balcony and large stone fireplace.

The adjoining combination breakfast and writing room also has a fireplace, and French doors open on a large screened verandah, beside a beautiful brook.

There is a suite consisting of a sitting room with an open fireplace, large bedroom with four windows and twin beds, and an adjoining private bathroom if desired. The occupants have exclusive use of the large, open upper verandah, which is ideal for sun baths.

All the bedrooms are unusually large and airy, each having three or four windows. One has an open fireplace. They are attractively furnished and the beds are excellent.

Breakfast is served at the Guest House; and luncheon, afternoon tea if desired, and dinner are served at the Tea House, unless otherwise necessary. One may have an attractive, dainty tray with a Continental breakfast, in their room. The food, cooking and service, already described for the Tea House, are those of an exclusive private home.

The brook is dammed opposite the house, forming a natural pool for bathing and swimming.

The property consists of more than five hundred acres of posted land, affording trout fishing and hunting in season.

It is located on Mt. Washington, which was originally known as Taghconic, the Indian title being purchased in 1757

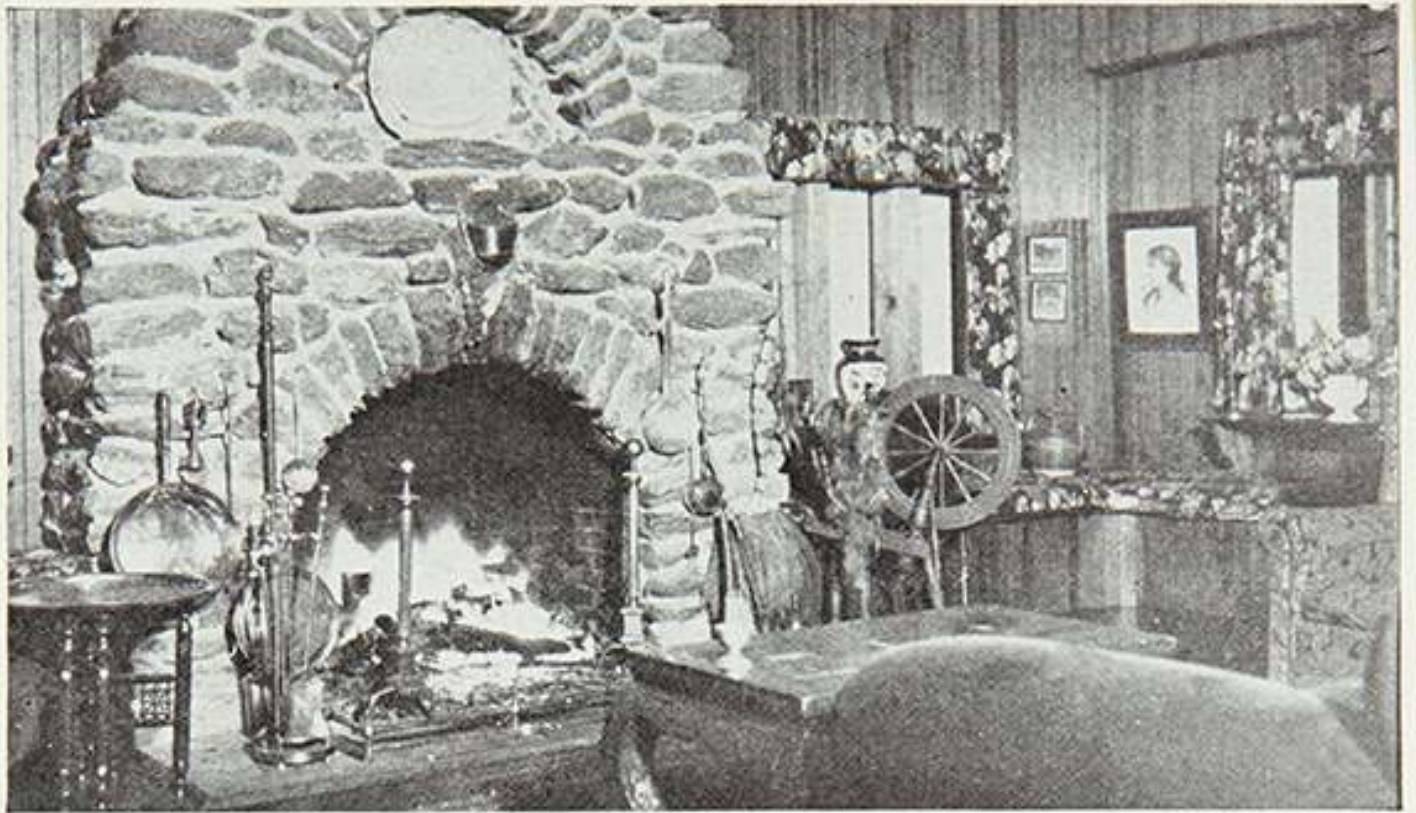
for £15. This town, "among the clouds," as it were, has an eventful and interesting history. It lies between Mt. Everett, which has an elevation of 2624 feet, and another range of mountains to the west, of nearly equal height.

As a health resort, winter or summer, no town in Berkshire County is more favorably situated, nor more accessible from New York City and vicinity.

The views of the surrounding country are unsurpassed, from the peaks of Mt. Race, Sunset, Lookout, Alander and others, including that monarch of all, Mt. Everett, from whose domelike summit one has an unrivalled view of the whole of Berkshire County, Western Connecticut and New York State to the Catskills.

The mountain is well provided with foot trails of varying degrees of steepness, offering real mountain climbing. Included is the well known Appalachian Trail, which crosses Sage's Ravine Brook in Connecticut, thence on to Bare Rock Falls in Massachusetts and follows to the summits of Race and Everett, finally joining the Elbow trail at beautiful Guilder Pond to Jug End, and on to the Mt. Washington road in South Egremont.

Besides the Mt. Everett Reservation, on the Western slope is Taconic State Park which includes Bash Bish Falls, probably the wildest and most impressive in New England.



There is a mail delivery daily, but there is no post office and there are no stores on Mt. Washington. In this simple, old-worldly town, with its scattering of houses, little white church, town hall and old graveyards, the turmoil and congestion of New York City seem more remote than the approximate 100 miles.

For those who require more than the offering of Mother Nature, golf and other diversions may be enjoyed, in a short drive to South Egremont or Great Barrington.

It is five and a half miles to Copake Falls, New York, and eight miles to South Egremont, Massachusetts. Four miles further on is Great Barrington, Massachusetts, with the adjacent towns of Stockbridge, Lee, Lenox and Pittsfield. In

the other direction are the Connecticut towns of Canaan, Salisbury and Lakeville. On the New York side the adjacent towns are Millerton, Hillsdale, Hudson and Albany.

The railroad station for Mt. Washington is Copake Falls, New York, on the Harlem Division of the New York Central Railroad. There is an excellent service of three hours and less, from Grand Central Station, New York.

All motorists are familiar with the good roads and scenic beauty of the routes to the Berkshires.

The minimum rates are \$10.00 a day and \$60.00 a week **for two persons**, American plan, with special monthly or seasonal rates.

References exchanged.

